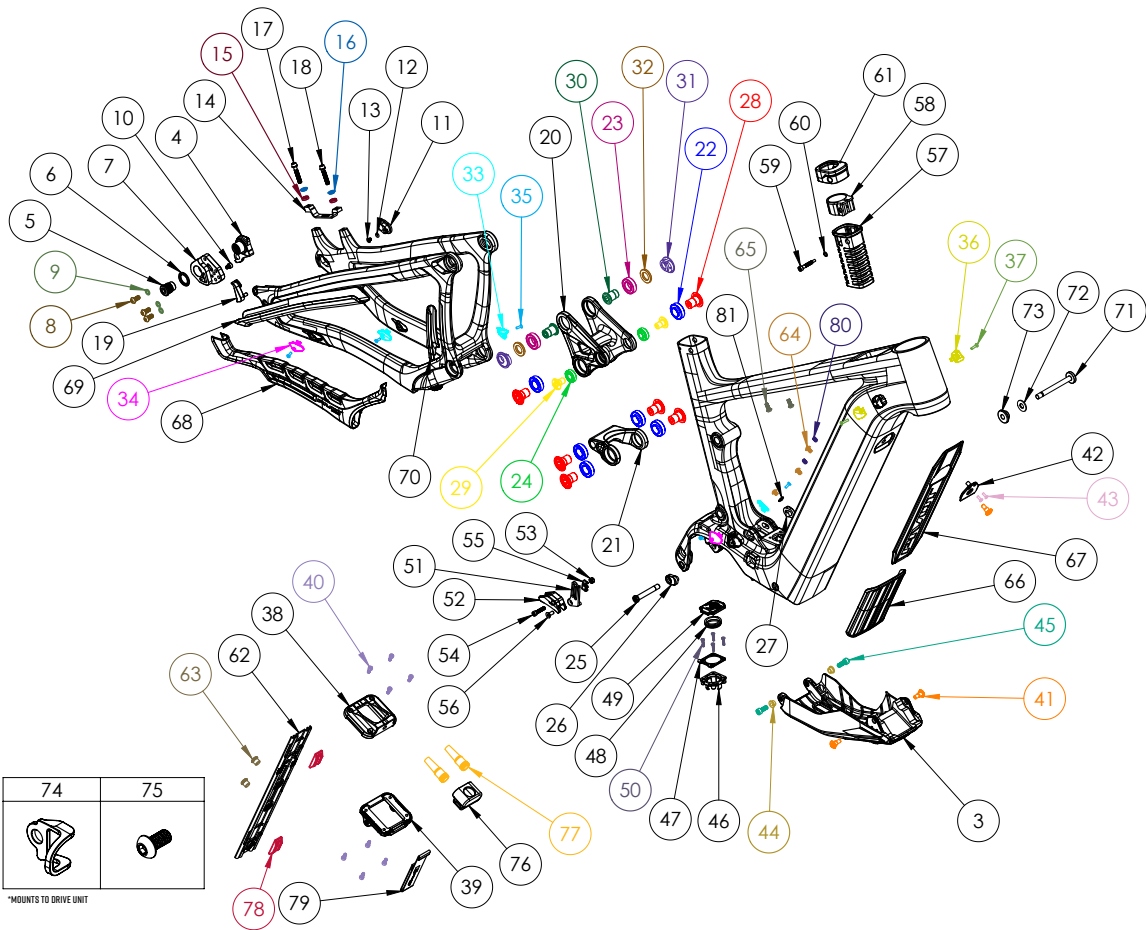


SHUTTLE LT GEN 3



BIKE CARE	PRODUCT TYPE	RECOMMENDED PRODUCT
G	GREASE	MOTOREX BIKE GREASE 2000
L	THREAD LOCKER**	LOCTITE THREAD LOCKER #243 (OR EQUIVALENT)
G/L	GREASE (BOLT SHAFT) / THREAD LOCKER (BOLT THREADS)	SEE ABOVE
A	ANTI-SEIZE	MOTOREX COPPER PASTE
Y	LIGHT DUTY THREAD LOCKER	LOCTITE THREAD LOCKER #222 (OR EQUIVALENT)
R	RETAINING COMPOUND	LOCTITE RETAINING COMPOUND #638 (OR EQUIVALENT)

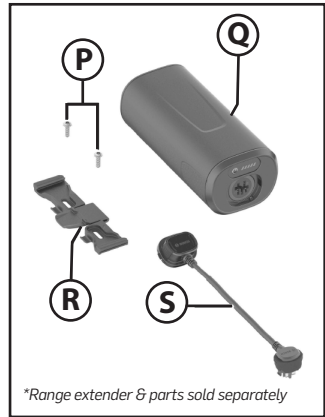
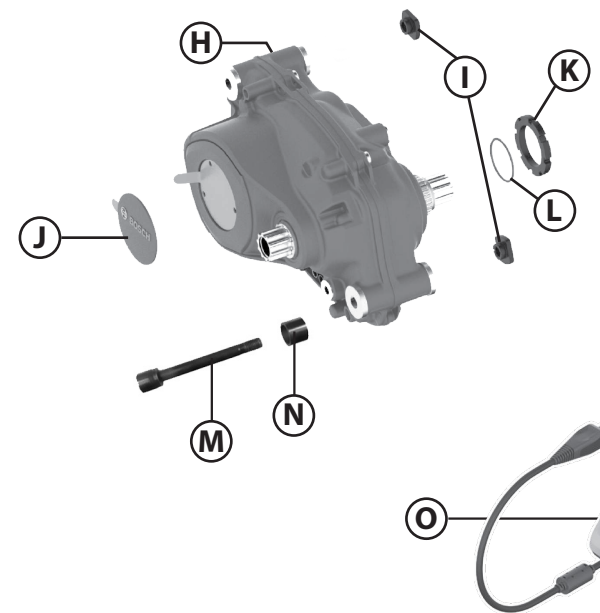
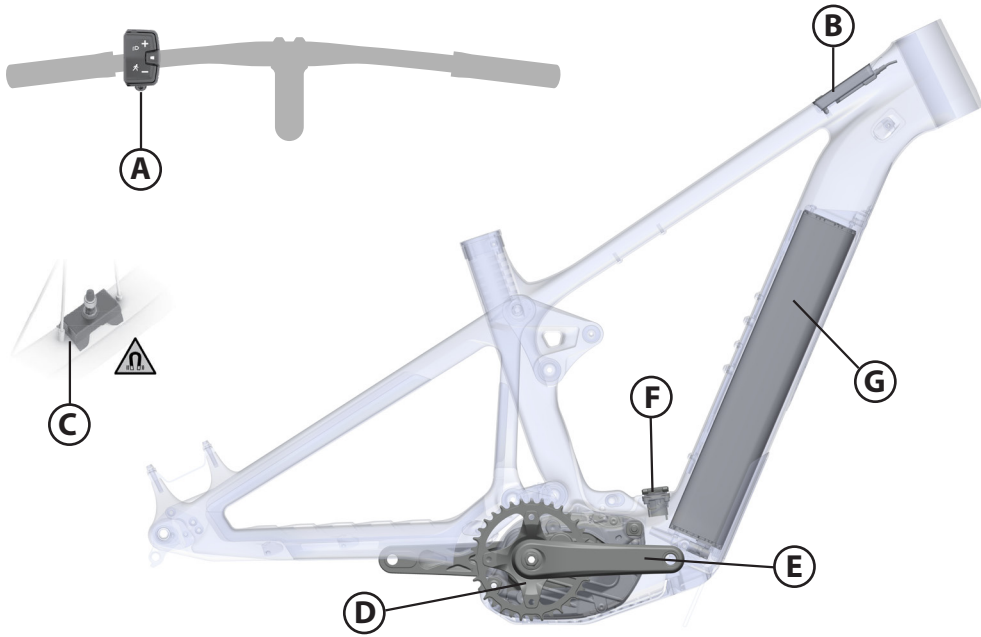
**THREADLOCKER SHOULD ALWAYS BE APPLIED TO THE CORRESPONDING FEMALE THREADS FOR THE BOLT SPECIFIED

NOT PICTURED	PART NUMBER	DESCRIPTION	TORQUE	*
-	I57MM THROUGH AXLE V5	I57MM UDH REAR AXLE	15 NM (11 LB-FT)	G
-	-	I2MM AXLE WASHER (INCLUDED W/ AXLE)		G
-	FP-CVR-PORT-FLAT-VI-RI	DUAL PORT - INTERNAL ROUTING HOLE COVER		
-	FP-GLM-PORT-DOUBLE-VI-RI	DUAL PORT - DOUBLE CLAMP		

NUMBER	PART NUMBER	DESCRIPTION	TORQUE	*
3	FP-CVR-SLTV3-SKD-VI-RI	SHUTTLE SKID PLATE, BDU38 WITH REMOVEABLE BATTERY		
4	FP-UDH-TA-I2MM-BLK-V2-RI	UNIVERSAL REAR DERAILLEUR HANGER		
5	FP-UDH-TA-I2MM-BLK-V2-RI	UNIVERSAL REAR DERAILLEUR HANGER BOLT	25 NM (18 LB-FT)	
6	FP-UDH-TA-I2MM-BLK-V2-RI	UNIVERSAL REAR DERAILLEUR HANGER WASHER		
7	FP-DRO-SWINGER-8MM-DS-VI	SWINGER UDH DROPOUT DS		
8	FP-BLT-BTN-M6*14-VI	SWINGER DROPOUT MOUNTING BOLTS	8 NM (5.9 LB-FT)	L
9	FP-WSH-M6-BLK-VI-RI	SWINGER DROPOUT MOUNTING BOLT WASHERS		
10	FP-SCW-SKT-M5*6-VI	SWINGER UDH STOPPER BOLT (SHORT POSITION)	5 NM (3.69 LB-FT)	
11	FP-DRO-FLIPCHIP-8MM-NDS-VI	SWINGER DROPOUT NDS FLIP CHIP		
12	FP-DRO-SWINGER-ORING-NDS-VI	SWINGER DROPOUT NDS O-RING		
13	FP-SCW-FLIPCHIP-M4*6-NDS-VI	M4X6 NDS FLIP CHIP SCREW	SNUG	
14	FP-BRK-SWINGER-BRKT-200MM-VI	SWINGER BRAKE BRACKET		
15	FP-WSH-M6-CONCAVE-VI	M6 SPHERICAL WASHER (CONCAVE)		
16	FP-WSH-M6-CONVEX-VI	M6 SPHERICAL WASHER (CONVEX)		
17	FP-SCW-SCK-M6*32-V2-RI	M6X32 SOCKETHEAD SCREW V2	8 NM (5.9 LB-FT)	
18	FP-SCW-SCK-M6*30-V2-RI	M6X30 SOCKETHEAD SCREW V2	8 NM (5.9 LB-FT)	
19	FP-GAP-SWINGER-FILL-VI	SWINGER FRAME GAP FILLER (LONG POSITION)		
20	FP-LNK-UL-83MM-VI-RI	83MM UPPER LINK		
21	FP-LNK-LL-50MM-V4-RI	50MM OUT-TO-IN LOWER LINK		
22	FP-BRG-6902-LLUMAXCN-B0	28MM 6902 EXTENDED BEARING - BLACK OXIDE		R
23	FP-BRG-6902-LLUMAX-B0	28MM 6902 STANDARD BEARING - BLACK OXIDE		R
24	FP-BRG-6900-LLUMAXE-B0	22MM 6900 EXT'D BEARING - BLACK OXIDE		R
25	FP-BLT-M8*12-V2-RI	M8 SHOCK BOLT FOR SHOCK TAB FLIP CHIP	13 NM (10 LB-FT)	G / L
26	FP-NUT-FLIPCHIP-8MM-DS-VI-RI	SHOCK TAB FLIP CHIP (DS)		G
27	FP-NUT-FLIPCHIP-8MM-NDS-VI-RI	SHOCK TAB FLIP CHIP (NDS)		G
28	FP-BLT-M14*20-BLK-V2-R2	M14X20 LINK BOLT	35 NM (27 LB-FT)	L
29	FP-BLT-M10*16.5-BLK-VI	MID TRUNNION MOUNT BOLT	13 NM (10 LB-FT)	L
30	FP-BLT-M14*20-BLK-V3-R2	M14X20 FLIP CHIP BOLT	35 NM (27 LB-FT)	L
31	FP-NUT-FLIPCHIP-8.5MM-RT-VI-RI	8.5MM FLIP CHIP		G
32	FP-WSH-SPC-I51*250*3W	M14X3MM FLIP CHIP SPACER		G
33	FP-CLM-MECH-FRM-VI	INTERNAL ROUTING CABLE CLAMP		
34	FP-CVR-MECH-FRM-V2	INTERNAL ROUTING HOLE COVER		
35	FP-SCW-FLT-M3*10-BLK	M3X10 CABLE PORT SCREW		
36	FP-CLM-PORT-SINGLE-VI-RI	DUAL PORT - SINGLE CLAMP		
37	FP-SCW-FLT-M3*15-BLK	DUAL PORT CLAMP SCREW BLACK		
38	FP-MNT-FRNT-BATT-BDU38-V2-RI	BOSCH 800WH PT FRONT BATTERY BRACKET		
39	FP-MNT-REAR-BATT-BDU38-V2-RI	BOSCH 800WH PT REAR BATTERY BRACKET		
40	FP-SCW-SCK-M4*10-VI-RI-BLK	M4X10 SOCKETHEAD BOLT - BLACK	SNUG	Y
41	FP-BLT-M6*16-VI-RI	BATTERY BRACKET MOUNTING BOLT	8 NM (5.9 LB-FT)	G
42	FP-MNT-SLTV3-BATT-VI-RI	BATTERY BRACKET MOUNTING PLATE		
	FP-SCW-FLT-M3*10-BLK	BATTERY BRACKET PLATE BOLT	SNUG	Y
44	FP-BUSH-M6*9*5-VI-R4	M6 BUSHING FOR REAR SKID PLATE BOLTS		G
45	FP-SCW-SCK-M6*16-BLK-VI-RI	M6X16 REAR SKID PLATE BOLTS	8 NM (5.9 LB-FT)	L
46	FP-CLP-BATT-CHG-VI-RI	BOSCH CHARGER TERMINAL CLIP		
47	FP-MNT-BATT-CHG-VI-RI	BOSCH CHARGER MOUNTING PLATE		
48	FP-GKT-BATT-CHG-V2-RI	BOSCH CHARGER HINGE GASKET		
49	FP-CVR-BATT-CHG-VI-RI	BOSCH CHARGER TOP CAP		
50	F04N.002.863	M3X14 CHARGING PORT MOUNTING SCREWS	SNUG	
51	FP-MNT-CG-V4	CHAIN GUIDE MOUNTING PLATE		
52	CH - CMI UP PT-22	UPPER CHAIN GUIDE		
53	CH - CMI UP PT-22	M5 LOCKNUT		
54	CH - CMI UP PT-22	M5X22 SOCKETHEAD SCREW		
55	FP-CG-CLM-VI	CHAIN GUIDE CABLE CLAMP		
56	FP-SCW-FLT-M5*12-BLK	M5X12 FLAT HEAD CG MOUNTING SCREW		Y
57	FP-INS-ADJ-STA-VI-RI	ADJUSTABLE STA INSERT		
58	FP-CLM-ADJ-STA-VI-RI	ADJUSTABLE STA CLAMP		
59	FP-BLT-M5*32-VI-RI	ADJUSTABLE STA CLAMP BOLT		
60	FP-WSH-51*80*1W-VI-RI	ADJUSTABLE STA M5 WASHER		
61	FP-CVR-ADJ-STA-VI-RI	ADJUSTABLE STA COVER		
62	FP-GDE-WIRE-PLATE-V2-RI	INTERNAL ROUTING PLATE		
63	FP-BLT-M10*8.5-VI-RI	INTERNAL ROUTING PLATE BOLT		G
64	FP-SCW-BTN-M5*8	M5X8 BUTTON HEAD BOLTS BLACK		
65	FP-BLT-BTN-M5*12-VI-RI-BLK	TOP TUBE TOOL BOLTS (SM/MD)		
66	FP-PRO-SLTV3-DT-VI-RI	SLTV3 DOWNTUBE PROTECTOR		
67	FP-PRO-SLTV3-DTU-VI-RI	SLTV3 DOWNTUBE PROTECTOR TOP		
68	FP-PRO-SLTV3-CS-VI-RI	SLTV3 CHAINSTAY PROTECTOR		
69	FP-PRO-SLTV3-SS-VI-RI	SLTV3 SEATSTAY PROTECTOR		
70	FP-PRO-SLTV3-UR-VI-RI	SLTV3 UPRIGHT PROTECTOR		
71	FP-BLT-M8*80-BLK-VI-RI	BOSCH BDU38 BOLT M8X80	30 NM (22 LB-FT)	G/L
72	FP-WSH-81*210*1.5W-BLK-VI-RI	BOSCH BDU38 WASHER		
73	FP-SPC-BDU38-NDS-NRRW-VI-RI	BOSCH BDU38 NARROW SPACER		G
74	FP-GDE-CBL-BDU38-VI-RI	BOSCH BDU38 CABLE GUIDE		
75	FP-SCW-BTN-M6*12-VI-RI-BLK	M6X12 CABLE GUIDE MOUNTING SCREW		
76	FP-CVR-ADP-BSC-VI-RI	BOSCH ADAPTER COVER		
77	FP-CBL-BT-BSC-VI-RI	BOSCH CABLE BOOT		
78	FP-PAD-INT-CABLE-ROUTE-VI	INTERNAL ROUTING PLATE PAD		
79	FP-BATT-STRAP-VI	BATTERY BRACKET STRAP		
80	FP-SCW-SET-M5*8-BLK	M5X8 SET SCREW	SNUG	
81	FP-WSH-M5*10*1-VI-RI	M5 WASHER		



SHUTTLE LT GEN 3 BOSCH SYSTEM PARTS



*Range extender & parts sold separately

PARTS & COMPONENTS				
LETTER	PART DESCRIPTION	PART NAME	TORQUE	*
A	MINI REMOTE	EBI3.100.01E		
B	KIOX 400G DISPLAY (PRO & TEAM)	EBI3.100.00Z		
	SYSTEM CONTROLLER (RIDE)	EBI3.100.000		
	1000MM HMI CABLE	EBI2.120.007		
	ADAPTOR FOR BRC3100 (RIDE)	EBI3.200.0AE		
	SCREW FOR ADAPTOR (RIDE)	EBI3.200.0AF		
C	RIM MAGNET/ SLEEVE (SPEED SENSOR)	EBH.200.015/ EBH.200.02S		
D	SPIDER & CHAINRING 104BCD 56.5 CL (ALL BUILDS)	ES-BSC38-104-565/ 00.6218.034.003		
E	CRANK ARMS (RIDE BUILDS)	CK-747/IS		
	CRANK ARMS (PRO BUILDS)	EC-2ISIS-160AM		
	CRANK ARMS (TEAM BUILDS)	EC-2ISIS-160CM		
F	CHARGING SOCKET & CABLE 100MM	EBI2.120.048		
	CHARGING SOCKET O-RING 24X2	EBI2.120.019		
G	POWERTUBE 800 BATTERY (US, CAN, JP, KOR)	EBI2.100.051		
	POWERTUBE 800 BATTERY (EU28, CH, NO, AUS, NZ)	EBI2.100.04Z		
H	PERFORMANCE LINE CX DRIVE UNIT	EBH.100.00E		
	PERFORMANCE LINE CX-R DRIVE UNIT	EBH.100.01D		
I	DRIVE UNIT MOUNTING NUTS (M8X1)	EBH.200.03C		L
J	PERFORMANCE LINE CX DRIVE UNIT LOGO BEZEL	EBH.200.0KD		
	PERFORMANCE LINE CX-R DRIVE UNIT LOGO BEZEL	EBH.200.12T		
K	DRIVE UNIT LOCKRING	EBH.200.01H	35 NM (27 LB-FT)	
L	O-RING FOR LOCKRING	I270.016.119		
M	REAR DRIVE UNIT SCREW	EBH.200.12G	30 NM (22 LB-FT)	G/L
N	SOCKET FOR REAR DRIVE UNIT SCREW	EBH.200.12F		
O	BATTERY CHARGER 4A110V/CABLE (US)	EBI2.110.000/ I270.020.343		
	BATTERY CHARGER 4A 230V/CABLE(EU)	EBI2.110.001/ I270.020.330		
	BATTERY CHARGER 4A 230V/CABLE(AUS)	EBI2.110.001/ I270.020.344		
	BATTERY CHARGER 4A 230V/CABLE(UK)	EBI2.110.001/ I270.020.331		
-	POWERMORE 250 KITS (AVAILABLE FROM PIVOT)	BOSCH RANGE EXTENDER 100MM (L & XL) / BOSCH RANGE EXTENDER 150MM (S & M)		
P	M5X8 BRACKET FASTENING SCREWS	FP-SCW-BTN-FLG-M5*0.80*8MM	3 NM (26 IN-LB)	
Q	POWERMORE 250 BATTERY (NA/EU)	B12.100.02T/ EB12.100.02S		
R	BRACKET FOR POWERMORE	EBI2.110.01A		
S	POWERMORE CABLE 100MM/150MM (100MM FOR L & XL / 150 FOR S & M)	EBI2.120.035 / EB12.120.036		

NOT PICTURED	PART DESCRIPTION	PART NAME	TORQUE	*
-	BATTERY ADAPTER 2 (2 PLUG IN LOCATION FOR BATTERY CABLE)	EBI2.100.015		
-	BATTERY BRACKET FOR BATTERY CONNECTOR	EBI2.100.03S		
-	BATTERY BRACKET W/O BATTERY CONNECTOR	EBI2.100.03T		
-	BATTERY BRACKET MOUNTING SCREWS	EBI2.100.03U	2 NM (18 IN-LB)	Y
-	BATTERY CABLE 350MM	EBI2.120.00S		
-	BOSCH BDU38 BOLT M8X80	FP-BLT-M8*80-BLK-VI-RI	30 NM (22 LB-FT)	G/L
-	BOSCH BDU38 WASHER	FP-WSH-81*210*1.5W-BLK-VI-RI		
-	BOSCH BDU38 NARROW SPACER	FP-SPC-BDU38-NDS-NRRW-VI-RI		