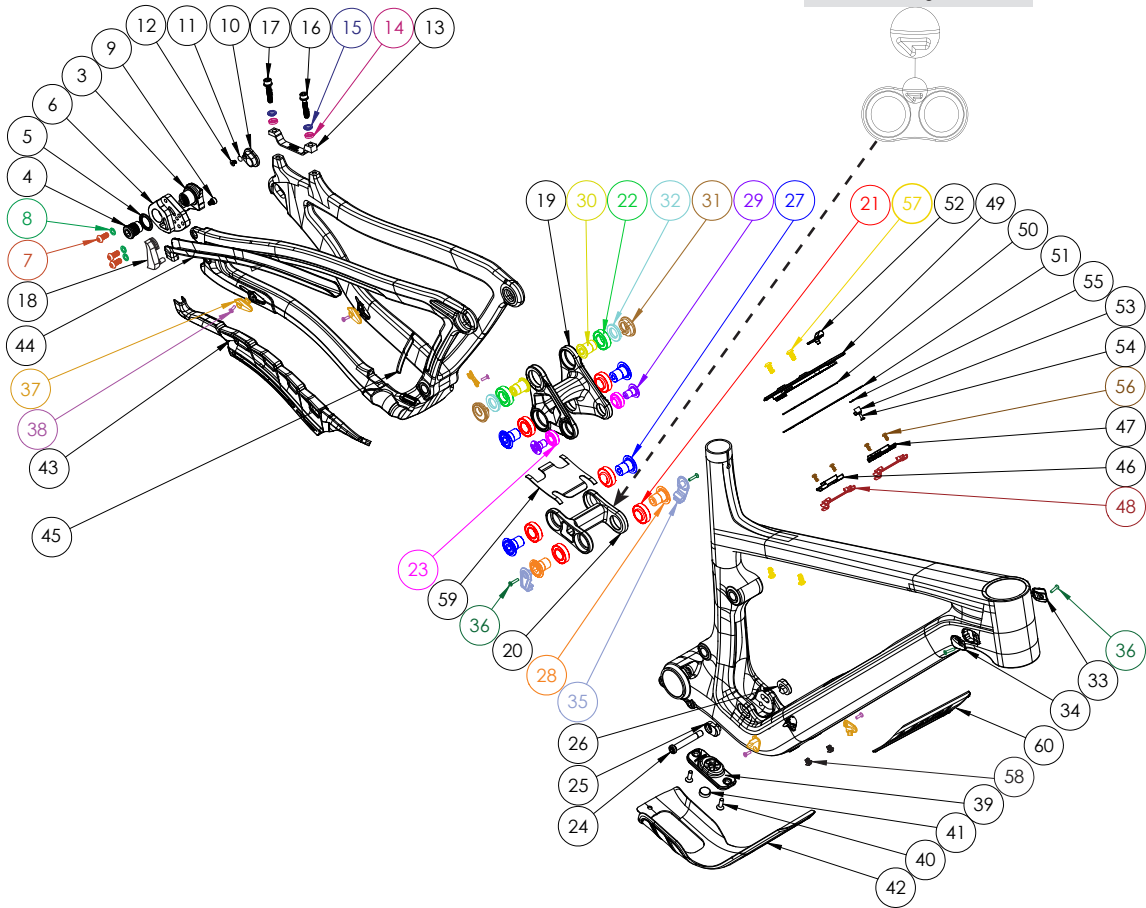


FIREBIRD

ATTENTION: Lower links are marked with an arrow on the non-drive side. The link must be oriented where the arrow points to the front triangle.



BIKE CARE	PRODUCT TYPE	RECOMMENDED PRODUCT
*	GREASE	MOTOREX BIKE GREASE 2000
G	THREAD LOCKER**	LOCTITE THREAD LOCKER #243 (OR EQUIVALENT)
L	GREASE (BOLT HEAD/SHAFT) / THREAD LOCKER (BOLT THREADS)	SEE ABOVE
G/L	ANTI-SEIZE	MOTOREX COPPER PASTE
A	LIGHT DUTY THREAD LOCKER	LOCTITE THREAD LOCKER #222 (OR EQUIVALENT)
Y	RETAINING COMPOUND	LOCTITE RETAINING COMPOUND #638 (OR EQUIVALENT)
R		



HARDWARE NUMBER	PART NUMBER	DESCRIPTION	TORQUE	*
3	FP-UDH-TA-I2MM-BLK-VI-RI (SOLD AS A SET)	UNIVERSAL REAR DERAILLEUR HANGER		
4	-	UNIVERSAL REAR DERAILLEUR HANGER BOLT	25 NM (18 LB-FT)	
5	-	UNIVERSAL REAR DERAILLEUR HANGER WASHER		
6	FP-DRO-SWINGER-8MM-DS-VI	SWINGER UDH DROPOUT DS		
7	FP-BLT-BTN-M6*14-VI	SWINGER DROPOUT MOUNTING BOLTS	8 NM (5.9 LB-FT)	L
8	FP-WSH-M6-BLK-VI-RI	SWINGER DROPOUT MOUNTING BOLT WASHERS		
9	FP-SCW-SKT-M5*6-VI	SWINGER UDH STOPPER BOLT (SHORT POSITION)	5 NM (3.69 LB-FT)	
10	FP-DRO-FLIPCHIP-8MM-NDS-VI	SWINGER DROPOUT NDS FLIP CHIP		
11	FP-DRO-SWINGER-ORING-NDS-VI	SWINGER DROPOUT NDS O-RING		
12	FP-SCW-FLIPCHIP-M4*6-NDS-VI	M4X6 NDS FLIP CHIP SCREW	SNUG	
13	FP-BRK-SWINGER-BRKT-200MM-VI	SWINGER BRAKE BRACKET		
14	FP-WSH-M6-CONCAVE-VI	M6 SPHERICAL WASHER (CONCAVE)		
15	FP-WSH-M6-CONVEX-VI	M6 SPHERICAL WASHER (CONVEX)		
16	FP-SCW-SCK-M6*32-VI-RI	M6X32 SOCKETHEAD	8 NM (5.9 LB-FT)	
17	FP-SCW-SCK-M6*30-VI-RI	M6X30 SOCKETHEAD	8 NM (5.9 LB-FT)	
18	FP-GAP-SWINGER-FILL-VI	SWINGER FRAME GAP FILLER (LONG POSITION)		
19	FP-LNK-UL-70MM-V3-RI	70MM UPPER LINK		
20	FP-LNK-LL-55MM-V3-RI	55MM OUT-TO-OUT LOWER LINK		
21	FP-BRG-6902-LLUMAXEEN	28MM 6902 EXTENDED RACE BEARING		R
22	FP-BRG-6902-LLUMAX	28MM 6902 STANDARD RACE BEARING		R
23	FP-BRG-6900-LLUMAXE	22MM 6900 EXTENDED RACE BEARING		R
24	FP-BLT-M8*12-V2-RI	M8 SHOCK BOLT FOR SHOCK TAB FLIP CHIP	13 NM (10 LB-FT)	G/L
25	FP-NUT-FLIPCHIP-8MM-DS-VI-RI	SHOCK TAB FLIP CHIP (DS)		G
26	FP-NUT-FLIPCHIP-8MM-NDS-VI-RI	SHOCK TAB FLIP CHIP (NDS)		G
27	FP-BLT-M14*20-BLK-V2-R2	M14X20 LINK BOLT	35 NM (27 LB-FT)	L
28	FP-BLT-M14*20-BLK-V5-RI	M14X20 LINK BOLT (M3 INTERNAL THREAD)	35 NM (27 LB-FT)	L
29	FP-BLT-M10*16.5-BLK-VI	M10 TRUNNION MOUNT BOLT	13 NM (10 LB-FT)	L
30	FP-BLT-M14*20-BLK-V3-R2	M14X20 FLIP CHIP BOLT	35 NM (27 LB-FT)	L
31	FP-NUT-FLIPCHIP-4.6MM-VI	4.6MM FLIP CHIP		G
32	FP-WSH-SPG-ISI*250*3W	M14X3MM FLIP CHIP SPACER		G
33	FP-CLM-PORT-DOUBLE-VI-RI	DUAL PORT - DOUBLE CLAMP		
34	FP-CLM-PORT-SINGLE-VI-RI	DUAL PORT - SINGLE CLAMP		
35	FP-GDE-RCKR-VI-RI	ROCKER BOLT CABLE GUIDE		
36	FP-SCW-FLT-M3*15-BLK	DUAL PORT CLAMP SCREW BLACK		
37	FP-CLM-MECH-FRM-VI	INTERNAL ROUTING CABLE CLAMP		
38	FP-SCW-FLT-M3*10-BLK	M3X10 CABLE PORT SCREW - BLACK		
39	FP-MNT-TOOL-BLK-VI-RI	TOPEAK TOOL MOUNT		
40	FP-SCW-FLT-M5*15	M5X15 TOPEAK TOOL MOUNT SCREWS		
41	FP-MNT-TLPLG-BLK-VI-RI	TOPEAK TOOL MOUNT PLUG		
42	FP-PRO-FBCV5-DT-XS/SM-VI-RI	FBCV5 DOWNTUBE PROTECTOR (XS/SM)		
42	FP-PRO-FBCV5-DT-M/L/XL-VI-RI	FBCV5 DOWNTUBE PROTECTOR (MD/LG/XL)		
43	FP-PRO-FBCV5-CS-VI-RI	FBCV5 CHAINSTAY PROTECTOR		
44	FP-PRO-FBCV5-SS-VI-RI	FBCV5 SEATSTAY PROTECTOR		
45	FP-PRO-FBCV5-UR-VI-RI	FBCV5 UPRIGHT PROTECTOR		
46	FP-SHD-HOOK-VI-RI	TOOL SHED - HOOK INSERT		
47	FP-SHD-CAM-INSRT-VI-RI	TOOL SHED - CAM INSERT		
48	FP-SHD-PLATE-WIDE-VI-RI (S-XL) FP-SHD-PLATE-NRRW-VI-RI (XS)	TOOL SHED - CABLE CLIP INSERT (WIDE FOR S-XL NARROW FOR XS)		
49	FP-SHD-DOOR-VI-RI	TOOL SHED - DOOR		
50	FP-SHD-PAD-VI-RI	TOOL SHED - RUBBER TOOL PAD		
51	FP-SHD-GKT-VI-RI	TOOL SHED - RUBBER GASKET		
52	FP-SHD-LEVER-VI	TOOL SHED - LEVER		
53	FP-SHD-CAM-VI-RI	TOOL SHED - CAM		
54	FP-SCW-FLT-M3*8-VI-RI	TOOL SHED - M3 LEVER ASSEMBLY SCREW	SNUG	
55	FP-SHD-WSH-WAVE-VI-RI	TOOL SHED - LEVER ASSEMBLY WAVE WASHER		
56	FP-SCW-BTN-ST-M3*8-VI-RI	TOOL SHED - M3 INSTALLATION SCREWS		
57	FP-BLT-BTN-M5*14-VI-RI-BLK	M5X0.8X12 WATER BOTTLE BOLTS		
58	FP-SCW-BTN-M5*6-BLK-VI-RI	M5X6 BUTTON HEAD SCREW (MD/LG/XL)		
59	FP-PRO-55MM-LL-VI-RI	55MM LOWER LINK PROTECTOR		
60	FP-PRO-PHXV5-DTU-VI-RI	PHOENIX DW6 DOWNTUBE PROTECTOR UPPER		

AXLES	PART NUMBER	DESCRIPTION	TORQUE	*
-	157MM THROUGH AXLE V5	157MM UDH REAR AXLE	15 NM (11 LB-FT)	G
-		12MM AXLE WASHER (INCLUDED W/ AXLE)		