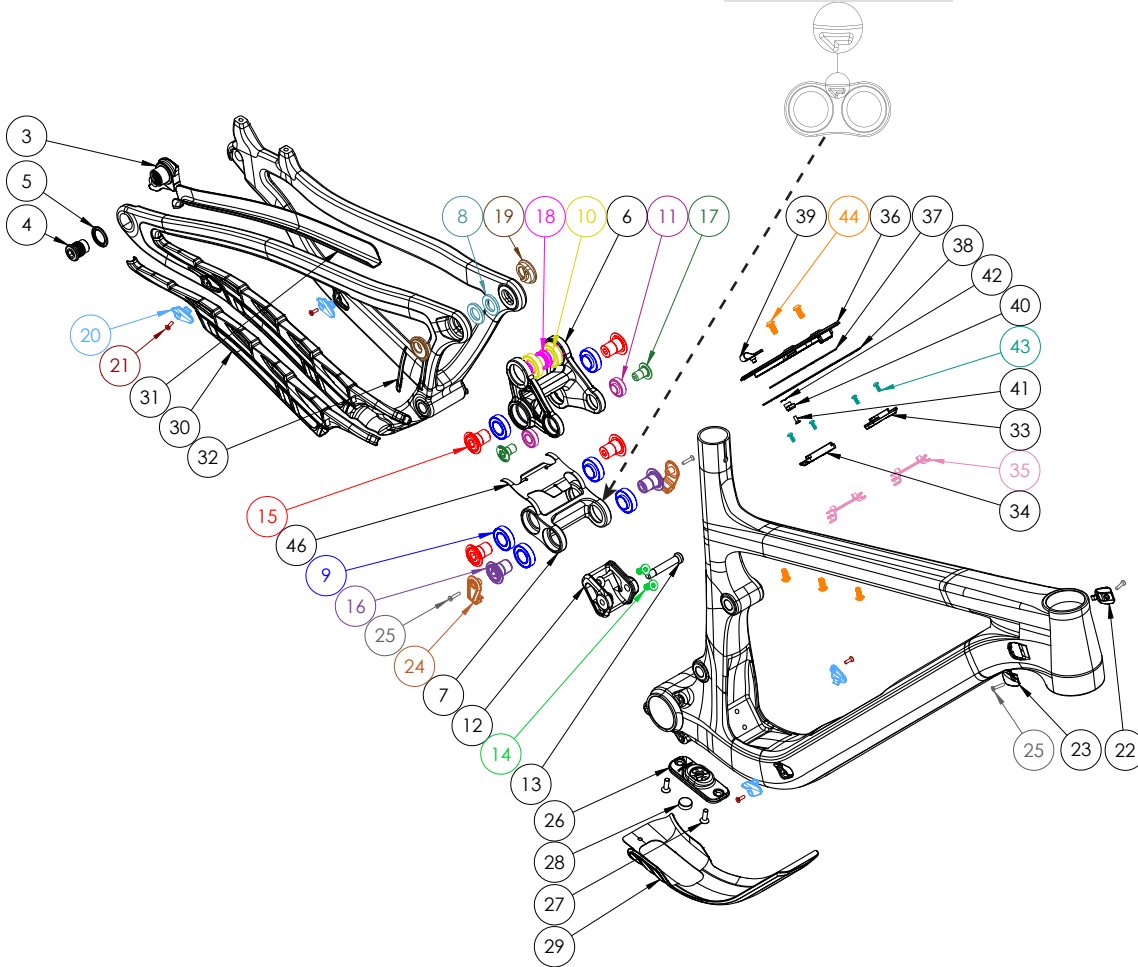


TRAILCAT LT

ATTENTION: Lower links are marked with an arrow on the non-drive side. The link must be oriented where the arrow points to the front triangle.



HARDWARE				
NUMBER	PART NUMBER	DESCRIPTION	TORQUE	*
3	FP-UDH-TA-I2MM-BLK-VI-RI	UNIVERSAL REAR DERAILLEUR HANGER		
4	-	UNIVERSAL REAR DERAILLEUR HANGER BOLT	25 NM (18 LB-FT)	
5	-	UNIVERSAL REAR DERAILLEUR HANGER WASHER		
6	FP-LNK-UL-57MM-LT-VI	TCCVI UPPER LINK-135MM (LT)		
7	FP-LNK-LL-34MM-EXT-VI	34MM OUT-TO-OUT LOWER LINK		
8	FP-WSH-SPC-15I*250*3W	M14X3MM FLIP CHIP SPACER		G
9	FP-BRG-6902-LLUMAXE-CN-B0	28MM 6902 EXTENDED MAX-E BEARING		R
10	FP-BRG-6902-LLUMAX-B0	28MM 6902 STANDARD MAX BEARING		R
11	FP-BRG-6900-LLUMAXE-B0	22MM 6900 EXT'D MAX-E BEARING		R
12	FP-MNT-SHOCKTAB-I6MM-VI-RI	SHOCKTAB BRACKET - I6MM		
13	FP-BLT-M8*45.7-BLK-V2	M8 FRONT SHOCK BOLT FOR 30.1MM SHOCK SPACING	13 NM (10 LB-FT)	G / L
14	FP-BLT-FLT-M6*16-VI-RI-BLK	M6X16 FLAT HEAD BOLT BLACK	6 NM (4.4 LB-FT)	G / L
15	FP-BLT-MI4*20-BLK-V2-R2	M14X20 LINK BOLT	35 NM (27 LB-FT)	L
16	FP-BLT-MI4*20-BLK-V5-RI	M14X20 LINK BOLT (M3 INTERNAL THREAD)	35 NM (27 LB-FT)	L
17	FP-BLT-MI0*16.5-BLK-VI	M10 TRUNNION MOUNT BOLT	13 NM (10 LB-FT)	L
18	FP-BLT-MI4*20-BLK-V3-R2	M14X20 FLIP CHIP BOLT	35 NM (27 LB-FT)	L
19	FP-NUT-FLIPCHIP-4.6MM-VI	4.6MM FLIP CHIP		G
20	FP-CLM-MECH-FRM-VI	INTERNAL ROUTING CABLE CLAMP		
21	FP-SCW-FLT-M3*10-BLK	CABLE PORT CLAMP SCREW BLACK		
22	FP-CLM-PORT-DOUBLE-VI-RI	DUAL PORT - DOUBLE CLAMP		
23	FP-CLM-PORT-SINGLE-VI-RI	DUAL PORT - SINGLE CLAMP		
24	FP-GDE-RCKR-VI-RI	ROCKER BOLT CABLE GUIDE		
25	FP-SCW-FLT-M3*15-BLK	DUAL PORT CLAMP SCREW BLACK		
26	FP-MNT-TOOL-BLK-VI-RI	TOPEAK TOOL MOUNT		
27	FP-SCW-FLT-M5*15	M5X15 TOPEAK TOOL MOUNT SCREWS		
28	FP-MNT-TLPLG-BLK-VI-RI	TOPEAK TOOL MOUNT PLUG		
29	FP-PRO-TCCVI-DT-XS/SM/MD-VI-RI	TRAILCAT VI DOWNTUBE PROTECTOR (XS/SM/MD)		
29	FP-PRO-TCCVI-DT-LG/XL-VI-RI	TRAILCAT VI DOWNTUBE PROTECTOR (LG/XL)		
30	FP-PRO-TCCVI-CS-VI-RI	TRAILCAT VI CHAINSTAY PROTECTOR		
31	FP-PRO-TCCVI-SS-VI-RI	TRAILCAT VI SEATSTAY PROTECTOR		
32	FP-PRO-TCCVI-UR-VI-RI	TRAILCAT VI UPRIGHT PROTECTOR		
33	FP-SHD-HOOK-VI-RI	TOOL SHED - HOOK INSERT		
34	FP-SHD-CAM-INSRT-VI-RI	TOOL SHED - CAM INSERT		
35	FP-SHD-PLATE-NRRW-VI-RI	TOOL SHED - CABLE CLIP INSERT (NARROW)		
36	FP-SHD-DOOR-VI-RI	TOOL SHED - DOOR		
37	FP-SHD-PAD-VI-RI	TOOL SHED - RUBBER TOOL PAD		
38	FP-SHD-GKT-VI-RI	TOOL SHED - RUBBER GASKET		
39	FP-SHD-LEVER-VI	TOOL SHED - LEVER		
40	FP-SHD-CAM-VI-RI	TOOL SHED - CAM		
41	FP-SCW-FLT-M3*8-VI-RI	TOOL SHED - M3 LEVER ASSEMBLY SCREW		
42	FP-SHD-WSH-WAVE-VI-RI	TOOL SHED - LEVER ASSEMBLY WAVE WASHER		
43	FP-SCW-BTN-ST-M3*8-VI-RI	TOOL SHED - M3 INSTALLATION SCREWS		
44	FP-BLT-BTN-M5*14-VI-RI-BLK	M5X0.8X12 WATER BOTTLE BOLTS		
45	FP-SCW-BTN-M5*6-BLK-VI-RI	M5X6 BUTTON HEAD SCREW (LG/XL)		
46	FP-PRO-34MM-EXT-LL-V3-RI	34MM LOWER LINK PROTECTOR		

AXLES	PART NUMBER	DESCRIPTION	TORQUE	*
-	I57MM THROUGH AXLE V5	I57MM UDH REAR AXLE	15 NM (11 LB-FT)	G
-		I2MM AXLE WASHER (INCLUDED W/ AXLE)		

BIKE CARE				
*	PRODUCT TYPE	RECOMMENDED PRODUCT		
G	GREASE	MOTOREX BIKE GREASE 2000		
L	THREAD LOCKER**	LOCTITE THREAD LOCKER #243 (OR EQUIVALENT)		
G/L	GREASE (BOLT HEAD/SHAFT) / THREAD LOCKER (BOLT THREADS)	SEE ABOVE		
A	ANTI-SEIZE	MOTOREX COPPER PASTE		
Y	LIGHT DUTY THREAD LOCKER	LOCTITE THREAD LOCKER #222 (OR EQUIVALENT)		
R	RETAINING COMPOUND	LOCTITE RETAINING COMPOUND #638 (OR EQUIVALENT)		

**THREADLOCKER SHOULD ALWAYS BE APPLIED TO THE CORRESPONDING FEMALE THREADS FOR THE BOLT SPECIFIED

