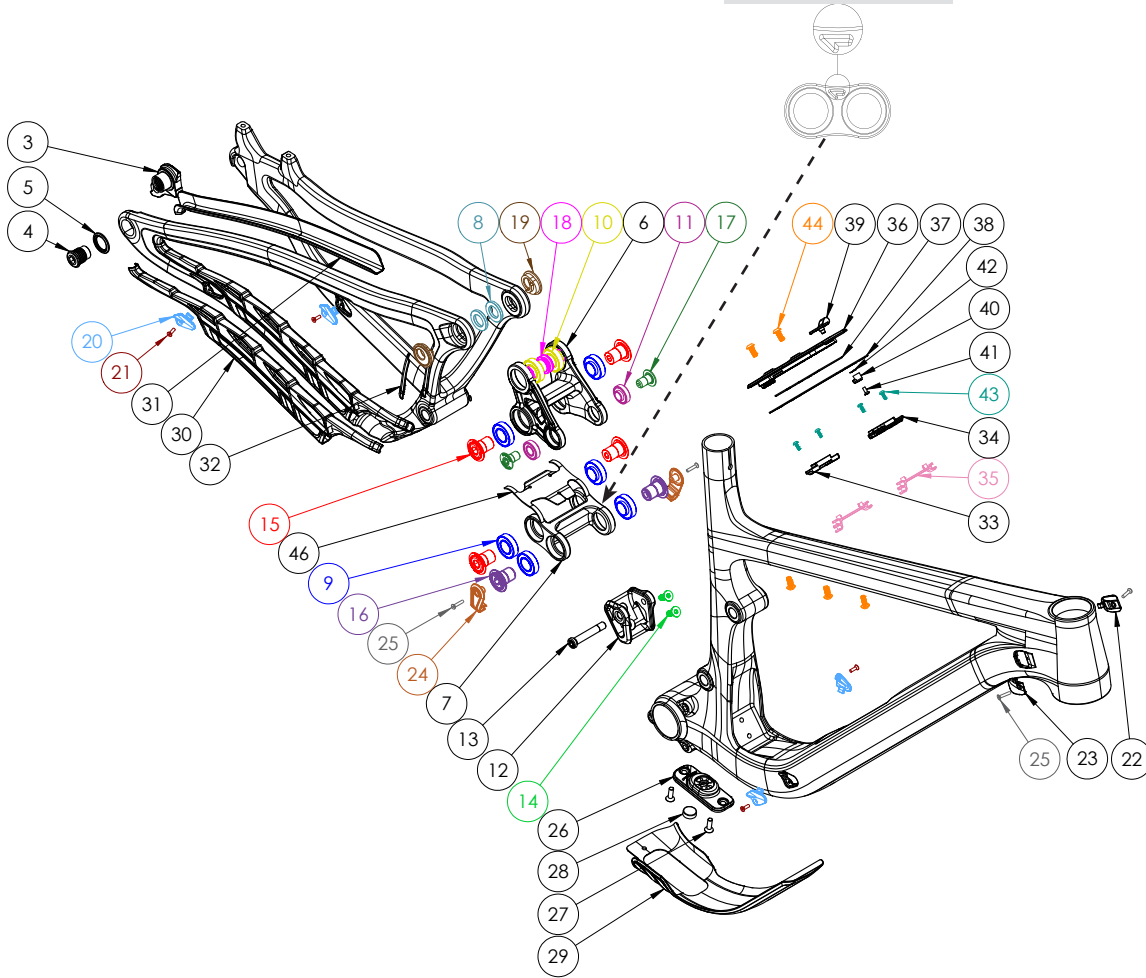


# TRAILCAT SL

**ATTENTION:** Lower links are marked with an arrow on the non-drive side. The link must be oriented where the arrow points to the front triangle.



| HARDWARE |                                |  |                  |       |
|----------|--------------------------------|--|------------------|-------|
| NUMBER   | PART NUMBER                    | DESCRIPTION                                  | TORQUE           | *     |
| 3        | FP-UDH-TA-I2MM-BLK-VI-RI       | UNIVERSAL REAR DERAILLEUR HANGER             |                  |       |
| 4        | -                              | UNIVERSAL REAR DERAILLEUR HANGER BOLT        | 25 NM (18 LB-FT) |       |
| 5        | -                              | UNIVERSAL REAR DERAILLEUR HANGER WASHER      |                  |       |
| 6        | FP-LNK-UL-57MM-SL-VI           | TCCVI UPPER LINK-120MM (SL)                  |                  | G     |
| 7        | FP-LNK-LL-34MM-EXT-VI          | 34MM OUT-TO-OUT LOWER LINK                   |                  |       |
| 8        | FP-WSH-SPC-15I*250*3W          | M14X3MM FLIP CHIP SPACER                     |                  |       |
| 9        | FP-BRG-6902-LLUMAXECN-B0       | 28MM 6902 EXTENDED MAX-E BEARING             |                  | R     |
| 10       | FP-BRG-6902-LLUMAX-B0          | 28MM 6902 STANDARD MAX BEARING               |                  | R     |
| 11       | FP-BRG-6900-LLUMAXE-B0         | 22MM 6900 EXT'D MAX-E BEARING                |                  | R     |
| 12       | FP-MNT-SHOCKTAB-I6MM-VI-RI     | SHOCKTAB BRACKET - I6MM                      |                  |       |
| 13       | FP-BLT-M8*45.7-BLK-V2          | M8 FRONT SHOCK BOLT FOR 30.1MM SHOCK SPACING | 13 NM (10 LB-FT) | G / L |
| 14       | FP-BLT-FLT-M6*16-VI-RI-BLK     | M6X16 FLAT HEAD BOLT BLACK                   | 6 NM (4.4 LB-FT) | G / L |
| 15       | FP-BLT-MI4*20-BLK-V2-R2        | M14X20 LINK BOLT                             | 35 NM (27 LB-FT) | L     |
| 16       | FP-BLT-MI4*20-BLK-V5-RI        | M14X20 LINK BOLT (M3 INTERNAL THREAD)        | 35 NM (27 LB-FT) | L     |
| 17       | FP-BLT-MI0*16.5-BLK-VI         | M10 TRUNNION MOUNT BOLT                      | 13 NM (10 LB-FT) | L     |
| 18       | FP-BLT-MI4*20-BLK-V3-R2        | M14X20 FLIP CHIP BOLT                        | 35 NM (27 LB-FT) | L     |
| 19       | FP-NUT-FLIPCHIP-4.6MM-VI       | 4.6MM FLIP CHIP                              |                  | G     |
| 20       | FP-CLM-MECH-FRM-VI             | INTERNAL ROUTING CABLE CLAMP                 |                  |       |
| 21       | FP-SCW-FLT-M3*10-BLK           | CABLE PORT CLAMP SCREW BLACK                 |                  |       |
| 22       | FP-CLM-PORT-DOUBLE-VI-RI       | DUAL PORT - DOUBLE CLAMP                     |                  |       |
| 23       | FP-CLM-PORT-SINGLE-VI-RI       | DUAL PORT - SINGLE CLAMP                     |                  |       |
| 24       | FP-GDE-RCKR-VI-RI              | ROCKER BOLT CABLE GUIDE                      |                  |       |
| 25       | FP-SCW-FLT-M3*15-BLK           | DUAL PORT CLAMP SCREW BLACK                  |                  |       |
| 26       | FP-MNT-TOOL-BLK-VI-RI          | TOPEAK TOOL MOUNT                            |                  |       |
| 27       | FP-SCW-FLT-M5*15               | M5X15 TOPEAK TOOL MOUNT SCREWS               |                  |       |
| 28       | FP-MNT-TLPLG-BLK-VI-RI         | TOPEAK TOOL MOUNT PLUG                       |                  |       |
| 29       | FP-PRO-TCCVI-DT-XS/SM/MD-VI-RI | TRAILCAT VI DOWNTUBE PROTECTOR (XS/SM/MD)    |                  |       |
| 29       | FP-PRO-TCCVI-DT-LG/XL-VI-RI    | TRAILCAT VI DOWNTUBE PROTECTOR (LG/XL)       |                  |       |
| 30       | FP-PRO-TCCVI-CS-VI-RI          | TRAILCAT VI CHAINSTAY PROTECTOR              |                  |       |
| 31       | FP-PRO-TCCVI-SS-VI-RI          | TRAILCAT VI SEATSTAY PROTECTOR               |                  |       |
| 32       | FP-PRO-TCCVI-UR-VI-RI          | TRAILCAT VI UPRIGHT PROTECTOR                |                  |       |
| 33       | FP-SHD-HOOK-VI-RI              | TOOL SHED - HOOK INSERT                      |                  |       |
| 34       | FP-SHD-CAM-INSRT-VI-RI         | TOOL SHED - CAM INSERT                       |                  |       |
| 35       | FP-SHD-PLATE-NRRW-VI-RI        | TOOL SHED - CABLE CLIP INSERT (NARROW)       |                  |       |
| 36       | FP-SHD-DOOR-VI-RI              | TOOL SHED - DOOR                             |                  |       |
| 37       | FP-SHD-PAD-VI-RI               | TOOL SHED - RUBBER TOOL PAD                  |                  |       |
| 38       | FP-SHD-GKT-VI-RI               | TOOL SHED - RUBBER GASKET                    |                  |       |
| 39       | FP-SHD-LEVER-VI                | TOOL SHED - LEVER                            |                  |       |
| 40       | FP-SHD-CAM-VI-RI               | TOOL SHED - CAM                              |                  |       |
| 41       | FP-SCW-FLT-M3*8-VI-RI          | TOOL SHED - M3 LEVER ASSEMBLY SCREW          |                  |       |
| 42       | FP-SHD-WSH-WAVE-VI-RI          | TOOL SHED - LEVER ASSEMBLY WAVE WASHER       |                  |       |
| 43       | FP-SCW-BTN-ST-M3*8-VI-RI       | TOOL SHED - M3 INSTALLATION SCREWS           |                  |       |
| 44       | FP-BLT-BTN-M5*14-VI-RI-BLK     | M5X0.8X12 WATER BOTTLE BOLTS                 |                  |       |
| 45       | FP-SCW-BTN-M5*6-BLK-VI-RI      | M5X6 BUTTON HEAD SCREW (LG/XL)               |                  |       |
| 46       | FP-PRO-34MM-EXT-LL-V3-RI       | 34MM LOWER LINK PROTECTOR                    |                  |       |

| AXLES | PART NUMBER           | DESCRIPTION                         | TORQUE           | * |
|-------|-----------------------|-------------------------------------|------------------|---|
| -     | I57MM THROUGH AXLE V5 | I57MM UDH REAR AXLE                 | 15 NM (11 LB-FT) | G |
| -     |                       | I2MM AXLE WASHER (INCLUDED W/ AXLE) |                  |   |

| BIKE CARE |   |   |  |  |
|-----------|---|---|--|--|
| *         | PRODUCT TYPE  | RECOMMENDED PRODUCT                             |  |  |
| G         | GREASE  | MOTOREX BIKE GREASE 2000                        |  |  |
| L         | THREAD LOCKER**   | LOCTITE THREAD LOCKER #243 (OR EQUIVALENT)      |  |  |
| G/L       | GREASE (BOLT HEAD/SHAFT) / THREAD LOCKER (BOLT THREADS) | SEE ABOVE                                       |  |  |
| A         | ANTI-SEIZE  | MOTOREX COPPER PASTE                            |  |  |
| Y         | LIGHT DUTY THREAD LOCKER                                | LOCTITE THREAD LOCKER #222 (OR EQUIVALENT)      |  |  |
| R         | RETAINING COMPOUND                                      | LOCTITE RETAINING COMPOUND #638 (OR EQUIVALENT) |  |  |

\*\*THREADLOCKER SHOULD ALWAYS BE APPLIED TO THE CORRESPONDING FEMALE THREADS FOR THE BOLT SPECIFIED

